

- Receiver/remodulator unit to receive 8VSB RF and output 8VSB RF
- Full color touchscreen display, with Ethernet and SNMP
- Internal RF isolator (UHF)
- Loss of Transport Stream Alarm, ASI I/O
- Ultra-efficient switching power supply
- All SI and tables from transport stream can be routed out
- Can add/drop/restamp names/components at PID level
- Includes IPTV streaming output to drive IP networks and STLs
- 2 Year Warranty

RF INPUT/OUTPUT CHARACTERISTICS

Transmodulator Format	Input: ATSC (8VSB) off air (DVB-S/S2, -T/T2, C/C2, ISDBTb, and DMBT also available) Output: Up to 4 RF carriers output (-10dBm) on ATSC 8VSB/QAM (others available)
Power Level	Adjustable 10 – 100% through amplifier
Impedance	Output of amplifier 50 Ω, N female (others available)
Features	Can assign major/minor channel numbers, in addition to routing incoming HD/SD channels and radio services Antenna input loop outs to allow for daisy chaining multiple tuners to same antenna

IPTV OUTPUT

IP Streaming	(1) Gigabit IPTV streaming output port
SPTS Streams	(45) selectable RTP/UDP Single Program Transport Streams, IGMP, multicast/unicast
Features	Can serve unlimited number of IP video players in Multicast Broadcast Mode Will play to any IP video player software, IPTV settop boxes, PCs, tablets, phones, etc. Can drive any industry-standard internet video distribution servers

ELECTRICAL CHARACTERISTICS

Flexible AC Input	100-240 Vac input, 50 / 60 Hz
AC Consumption	Amplifier: 1,040W typical [208Vac/5Aac] (dependent on frequency) Transmodulator: 65W max

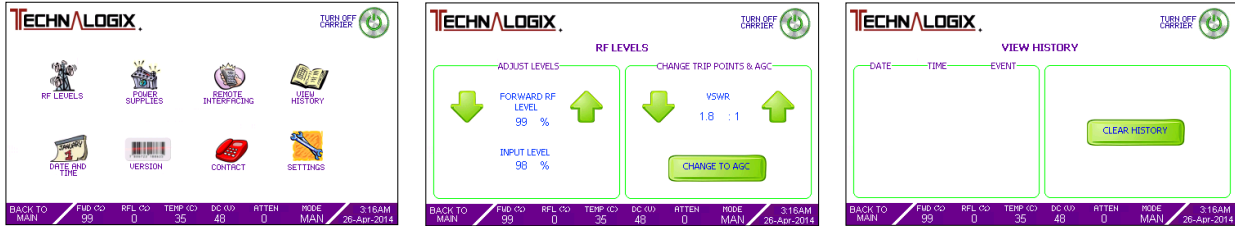
PHYSICAL FEATURES

Minimal Rack Space	Amplifier: 3U (H) x 25" (D) x 19" (W) Transmodulator: 1U (H) x 16.5" (D) x 19" (W)
Lightweight Enclosures	Amplifier: 40 lbs aluminum Transmodulator: 13 lbs aluminum
Operating Temperature	0 to +45° C
Humidity	Natural and forced air circulation, redundant fans 90%, non-condensing

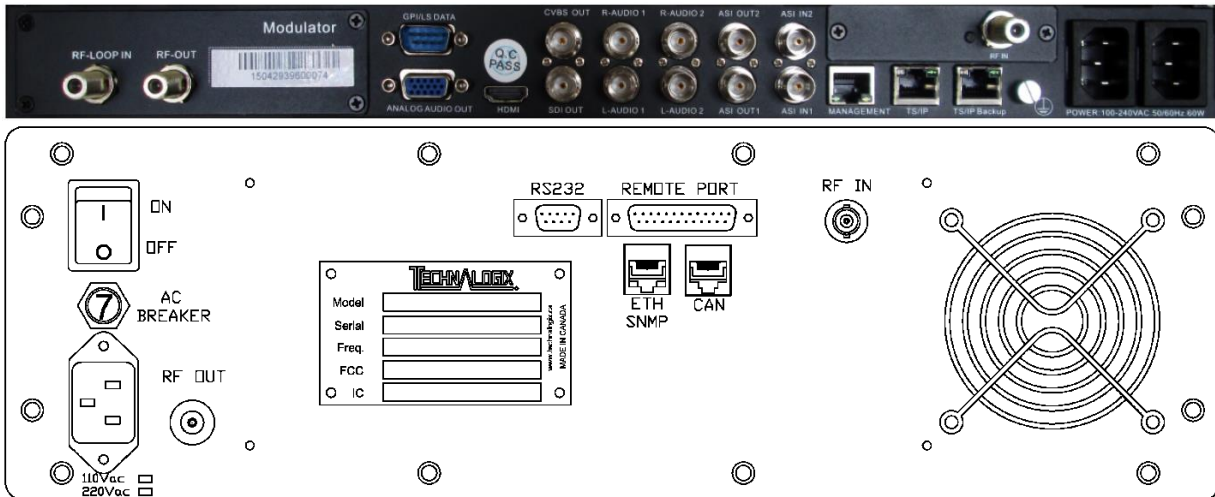
** Due to continuous product improvements, Technalogix reserves the right to change specifications without notice. **

INTERFACE

DB25 Remote Port	<p>Control: RF carrier on/off, RF power up/down, reset</p> <p>Monitor: Forward/reflected RF level, control PCB Vcc</p> <p>Flags: Overdrive, VSWR (adjustable trip point), high temperature</p>
Ethernet	<p>Control: RF carrier on/off, RF power up/down, AGC/manual mode, change VSWR trip point, reset</p> <p>Monitor: Forward/reflected RF level, pallet voltage, RF input level, temperature, VSWR trip point, model/serial number</p> <p>Flags: Carrier on/off, overdrive, pallet voltage, VSWR, RF input, temperature, AGC / manual</p>
SNMP	<p>Control: RF carrier on/off, RF power up/down, AGC/manual mode, change VSWR trip point, reset</p> <p>Monitor: Forward/reflected RF level, DC pallet voltage, RF input level, temperature, pallet current, attenuation, run time, RF fault, model/serial number</p> <p>Flags: Overdrive, VSWR, temperature, SNMP error</p>



Screenshots off Touchscreen Interface



** Due to continuous product improvements, Technalogix reserves the right to change specifications without notice. **